

GEBERIT BIM PLUG-IN

PLUG-IN AND PLAN



**KNOW
HOW**
INSTALLED



INTEGRATED SOLUTION IT'S ALL IN

Digital planning and construction using the BIM method has brought about fundamental changes in the construction industry. The holistic and model-based approach means that planning and construction processes can also be optimised and accelerated within the sanitary industry. Geberit's aim is to create simple and innovative solutions that offer sanitary engineers, architects and contractors added safety and greater cost-effectiveness. And with the new Geberit BIM Plug-in for Autodesk Revit®, another important step has been taken in the right direction.

A SINGLE PLUG-IN FOR ALL TOOLS

It's never been so easy: The new Geberit BIM Plug-in for Autodesk Revit® is an integrated tool that brings together all previous Geberit planning and calculation tools for Autodesk Revit® in a single integrated application.

LIGHTWEIGHT AND HANDY BIM OBJECTS

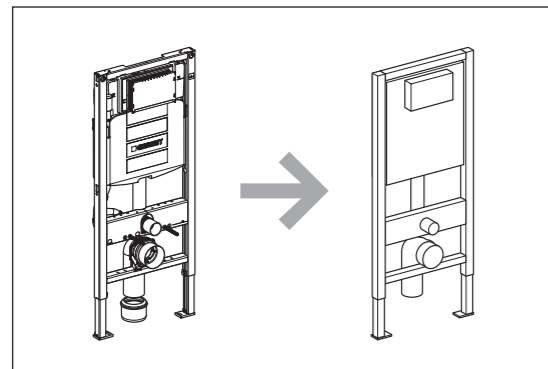
Geberit relies on highly simplified, parametric geometries with all the metadata that is relevant for planning in the background. This avoids overloading CAD systems from the outset and allows for efficient planning. Despite their highly simplified geometry, Geberit BIM objects meet the requirements of all planning and construction phases, right through to facility management.

STRAIGHTFORWARD SANITARY PLANNING

Finding up-to-date, complete and valid BIM content that is easy to manage is often a challenge in itself. The Geberit BIM Plug-in offers a reliable, integrated solution that meets all the needs for a straightforward and correct planning process.

AS CURRENT AS IT GETS

The direct connection to the Geberit product information management (PIM) system ensures that the user only uploads tested and approved BIM objects. This prevents the opportunity for planning errors caused by faulty or invalid BIM content.



Complex static data becomes simple parametric models.

GEBERIT BIM PLUG-IN FOR AUTODESK REVIT®



The Geberit BIM Plug-in can be downloaded free of charge from any Geberit website (www.geberit-global.com/bim) or from the Autodesk app store (www.apps.autodesk.com).



CATALOGUE MODULE

Quick and direct access to all Geberit BIM content. The Catalogue module includes a whole host of product groups spanning piping systems, installation systems, and now also ceramic products and bathroom furniture. This module also provides access to all documents associated with the product.



INSTALLATION SYSTEMS MODULE

Simple design of the installation systems with a complete material list. The module saves the need for parallel planning in another software to facilitate the planning process.



WIZARD MODULE

Practical functions are available to support pre-fabrication planning, such as the segmenting length command or the unique numbering of all components in the supply network. What's more, pipe cutting optimisation and accurate material lists help improve operational efficiency.



PLUVIA MODULE

For calculating the hydraulic certification and dimensioning for roof drainage with Geberit Pluvia directly in Autodesk Revit®.

PLANNING MADE EASY

FROM SHELL TO FINISHED BATHROOM

The entire Geberit product universe complete with all its calculation options is now available in a single central tool – for integrated planning from the piping system through to the final bathroom fittings.

IN FRONT OF AND BEHIND THE WALL

Everything that belongs together now stays together in the planning phase. It doesn't matter whether the chosen bathroom design determines the installations required or whether the bathroom is equipped based on MEP specifications, any planning errors or changes are indicated at an early stage.

PLANNING GEBERIT GIS, KOMBIFIX, AND DUOFIX

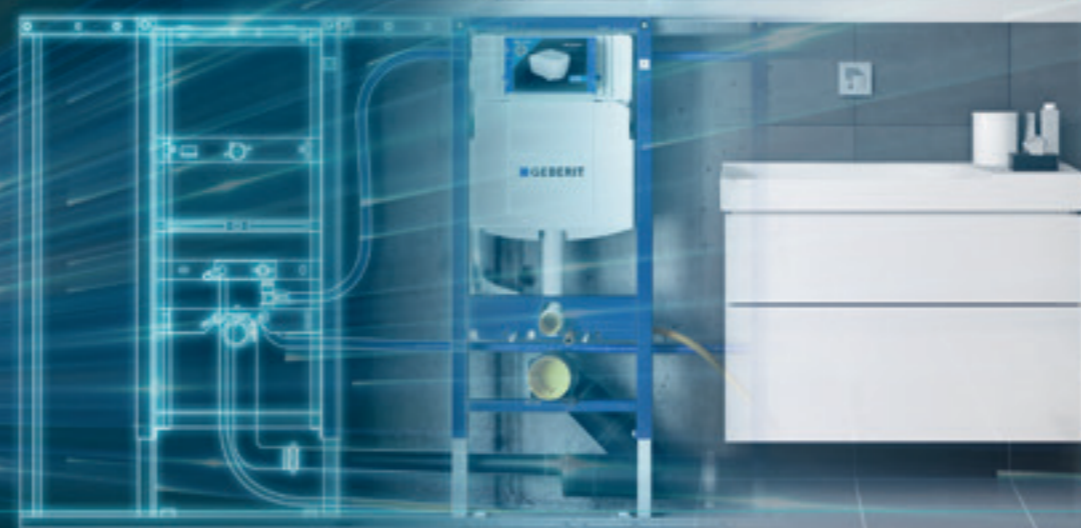
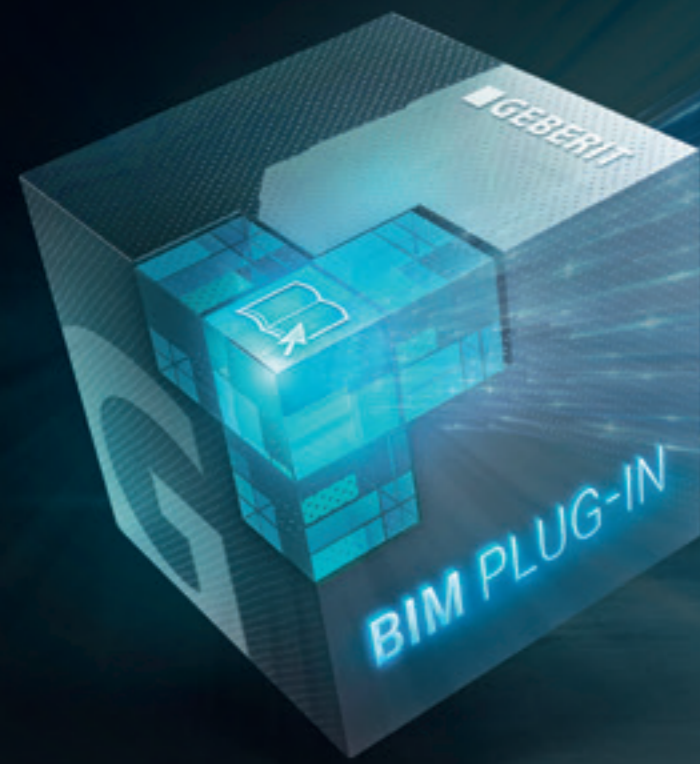
Parametric BIM content for Geberit installation systems offers a wide range of added value for planners. It takes a whole host of factors into account, including the height adjustability, angle adjustment and depth of the connection bend, as well as the adjustable installation depth of the installation element.

BIM MODELS FOR ARCHICAD®

The models in the ceramic and furniture ranges are depicted in both the right shape and the right colour*. To take an example, the Geberit Revit models in the ceramic and bathroom furniture series are also helpful for architects, as native Revit® models can also be read into the new ArchiCAD 24 version.

CONSTANT EXPANSION

When it comes to functionality and range, the Geberit BIM Plug-in is a comprehensive planning and calculation tool that is available to users free of charge. The integration of ceramic products and bathroom furniture facilitates a holistic approach from architecture to MEP planning and interior design.



LEAN WORKFLOW

NO MORE **BACKWARDS** **AND FORWARDS**

Work is so much easier with the Geberit BIM Plug-in, which steps in at just the right moment to do some of the thinking for you. No annoying workarounds, no time wasted searching, and significantly fewer sources of error.

FIND THINGS IN NO TIME WITH THE ARTICLE NUMBER

Not sure quite where to look in the Geberit product structure? No problem! Just like the online catalogue, the Geberit BIM Plug-in offers a search function by article number. All you have to do is enter at least three digits and the tool searches the database for possible hits. Of course, the more digits you enter, the faster you will find the product you are looking for.

FLEXIBLE PLANNING OF INSTALLATION SYSTEMS

The Installation Systems module allows you to design and calculate pre-wall installations automatically without the need for further tools. The results include not only construction drawings, but also exact cutting and material lists.

INTEGRATED ROOF DRAINAGE

The Pluvia module facilitates optimal hydraulic dimensioning of Geberit Pluvia roof drainages. The current regulations and standards are stored in the plug-in, and there is no need to jump back and forth between different software solutions.

AUTOMATIC ARTICLE NUMBER FOR PIPELINES

The Autodesk Revit® system pipes do not have any article numbers. With the help of the numbering wizard, the Geberit article numbers can be written directly on the system pipes. This not only saves time spent looking things up, but also prevents the errors associated with manual entries. Even for ongoing or older projects, a model-based tender can be generated very easily.

FLEXIBLE INSTALLATION READY? **DONE!**

Sanitary planning with the Geberit BIM Plug-in offers a whole host of advantages for efficient, model-based prefabrication. Well-thought-out functions facilitate efficient, model-based prefabrication with the greatest possible freedom when it comes to the arrangement of the components to be prefabricated. In this way, the Geberit BIM Plug-in enables cost-optimised MEP planning and increases economic efficiency in the process.

PERFECT PIPE LENGTH WITH THE Z-DIMENSION

When modelling the BIM objects, waste water prefabrication requirements have already been taken into account. As a result, all of the fittings are equipped with the article-specific Z-dimensions. This means that the pipelines to be connected are automatically shortened to the correct length for the prefabrication.

AUTOMATIC SEGMENTATION

With the segmenting length wizard, the Geberit BIM Plug-in subdivides the drawn pipe runs into the deliverable lengths of the pipes and inserts the correct fittings at the connection points.

FREELY SELECTABLE DESIGNATION OF PIPE RUNS

The numbering wizard can be used to sequence and number components and individual sections of a

complete supply network. This allows the operator to retain full control over the number assignment thanks to freely selectable logic. As a result, it is possible to precisely define in the model which components of the supply network are to be prefabricated an essential prerequisite for efficient prefabrication.

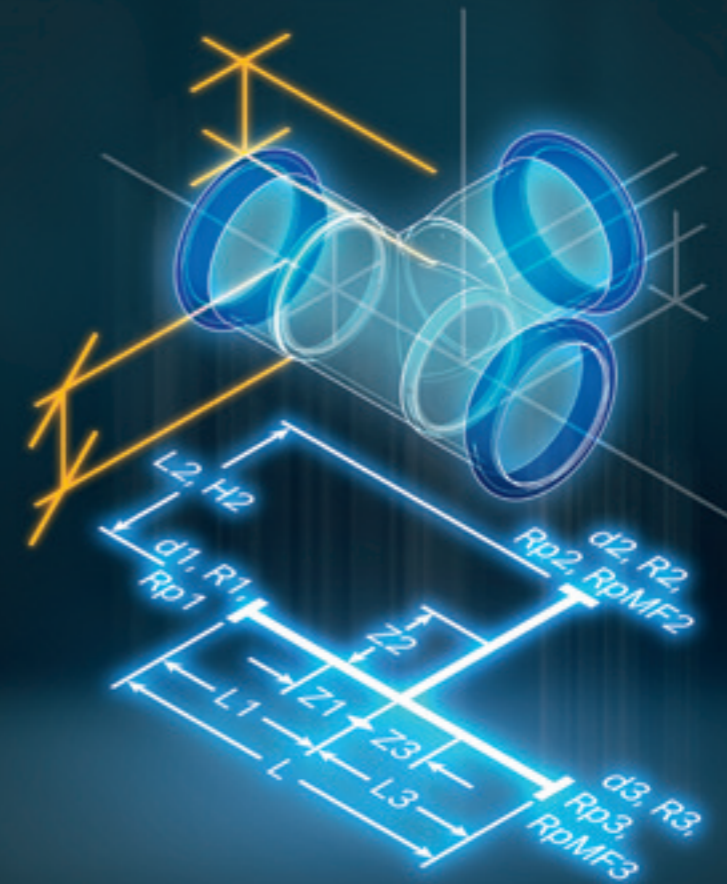
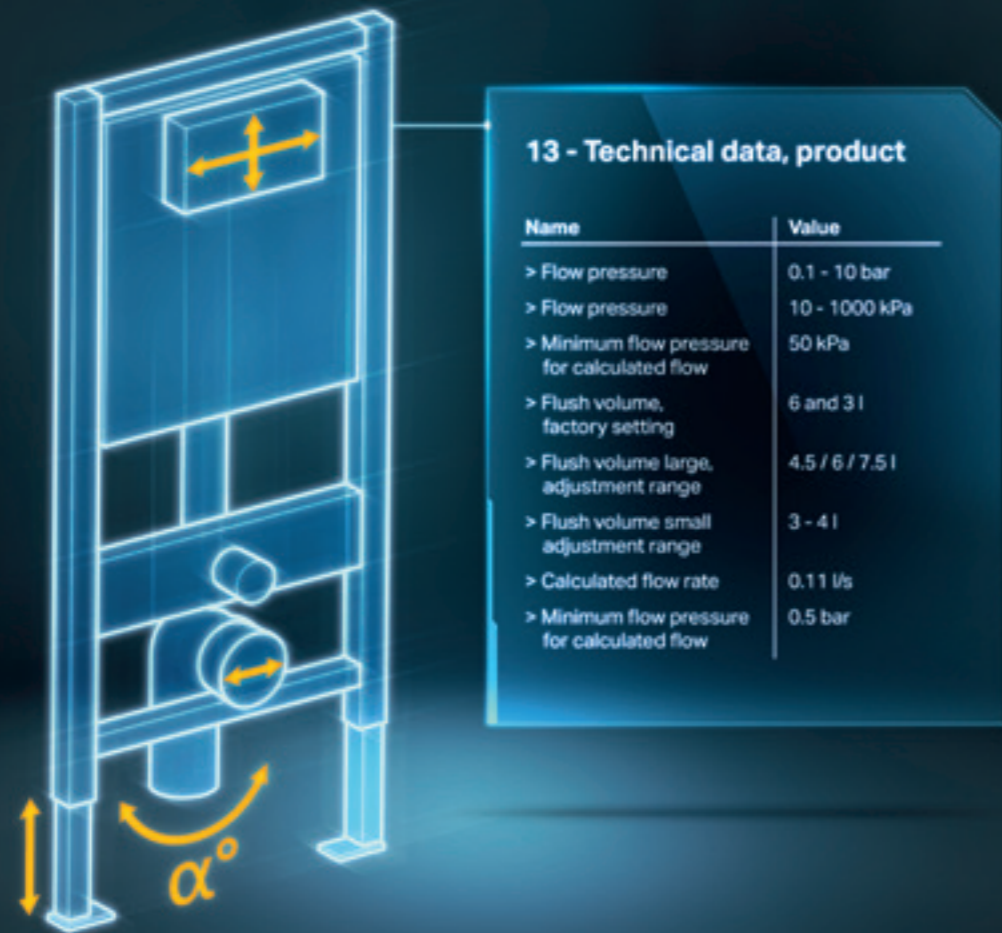
STRAIGHTFORWARD OVERVIEW

A list of pipelines and fittings sorted by item number can be exported from Autodesk Revit®. This means that pre-cut pipe sections can be easily labelled to ensure quick assignment and identification during the mounting process, making it much easier to bring together prefabricated, numbered segments or pipe sections on the building site.



Easy installation thanks to consistent and clear labelling of cut to length pipe sections.





GEBERIT BIM CONTENT STANDARD **READY FOR ANY** CHALLENGE

THE GEBERIT BIM CONTENT STANDARD FOR REVIT® FAMILIES

The geometric complexity of our CAD and BIM content (Revit®) is significantly reduced to save computer and software resources and facilitate efficient workflows. Based on the in-house BIM and CAD modelling guideline, the Geberit CAD and BIM content has been developed in collaboration with internal and external experts. The focus here is on high information density and easy-to-use geometries. Through integration with Geberit's

internal product information management system (PIM), the content records always correspond exactly to the local sales assortments and are even available in more than 30 languages. This ensures that all information is linguistically accessible and prevents the inclusion of objects that may not be available locally. Thanks to a wide range of setting options, Geberit BIM content is highly variable and suitable for every planning and construction phase.

Our content philosophy is as clear and simple as our objects: the application has to be straightforward, reliable and as practical as possible. This is why we uphold our own high BIM content standard, providing users with unparalleled flexibility.

GEBERIT BIM AND 2D/3D CAD CONTENT FOR THIRD-PARTY SOFTWARE

You decide which tools to use. We provide you with a wide assortment of 2D and 3D CAD and BIM formats available for free download across all local Geberit online catalogues. Available file formats include DWG, DXF, DXF (3D), DWG (3D), IGES (3D), OBJ (3D), STEP (3D) and SAT (3D).

Geberit maintains close partnerships with established suppliers to ensure that our products stay up to date and compliant with market standards in their respective content catalogues.

AUTOCAD

Dendrit

LINEAR

Trimble

Bausoft
HAUSTECH CAD

SOLAR
COMPUTER



LIMITLESS PLANNING HAND IN HAND

Planning with the Geberit BIM Plug-in significantly increases planning convenience, as the Geberit BIM objects are offered in over 30 national languages, cover all local Geberit product assortments, and are constantly updated. To make all of this possible, Geberit invests a great deal in the process of creating and updating the BIM content and in the continuous expansion of the Geberit BIM Plug-in. Ultimately, everyone involved in the project, from architects and sanitary engineers to plumbers, building owners and end users, benefit from the quality of the database.

WORLDWIDE PLANNING APPLICATIONS

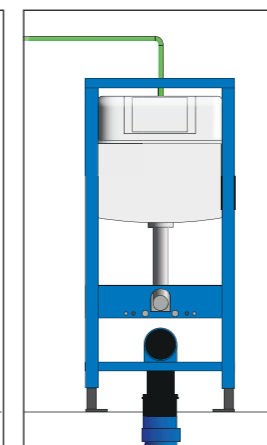
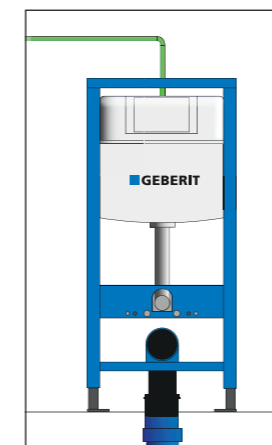
The ability to select a specific language and region allows the Geberit BIM Plug-in to be used worldwide. What's more, local product catalogues also ensure that only products that are available locally are used.

MANUFACTURER-NEUTRAL TENDERS

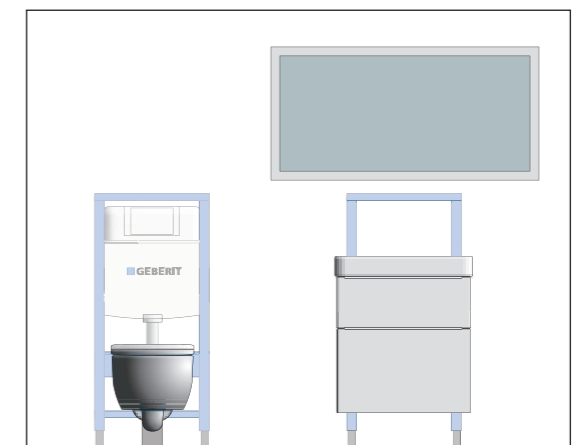
Public projects are often tendered on a manufacturer-neutral basis. This is why Geberit BIM content can be changed to generic designations with a simple click in the built-in parameters. Once the tender is over, this can be reset so that the time-consuming replacement of objects in the BIM model is no longer necessary.

SIMPLE COLLABORATION

The new BIM objects for Geberit ceramics and bathroom furniture facilitate close cooperation between architects and MEP planners, as architects can get the bathroom fully equipped with furniture and sanitary appliances before the MEP planning even takes place. This gives MEP planners a much better impression of how architects envisage the bathroom.



Manufacturer-specific versus manufacturer-neutral.

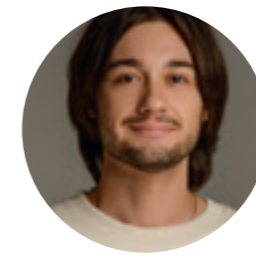


Bathroom furniture and ceramics can be visualised in the planning phase.

INSIGHTS

FROM RELIABLE SOURCES

There's just no substitute for good planning and architecture. This is why Geberit is committed to making everyday office life easier, smoother and more practical with a variety of appropriate solutions. We also never underestimate the importance of effective cooperation – and neither do our users.



Vladislavs Aleksandrov
BIM-Manager Silveroc

ACCESS TO LATEST INFORMATION

„As an active Revit user and BIM-head myself I recommend this plug-in to everyone who both wants to work more efficiently in Revit as well as get a great example of how it should be done. Geberit has accomplished something that most of manufacturers are very far from in terms of BIM development. Plug-in is easy to use, you have access to latest information possible, all documents included, video material for better understanding. Parameters, LOD options, elements' availability according to various markets. Moreover, Geberit BIM team is open towards users and willing to help with any question you could possibly think of. Did I mention it is free of charge?“

Silveroc specialises in project management and construction management services in the areas of residential and hospitality real estate.

www.silveroc.com



Stefan Wüst
Managing Director
BIM-to-Field-Experte
Certified Sanitary Technician (STSBern)
Certificate of Advanced Studies in
Digital Construction (FNHW)
Müller & Wüst AG

SHORTER PROJECT TIMELINES

“Using our approach and the reliable content provided by the Geberit plug-in for Autodesk Revit®, it is possible for us to complete a basement renovation with new supply pipes in just one day. In fact, our process allowed us to handle a basement distribution including water heater in the space of a day without any temporary construction work and only minimal restrictions for the residents.“

Müller Wüst AG has established a strong reputation in the technical building systems market with its specially developed MW method aimed at model-based operations. In doing so, it has asserted itself as a specialist in waste water prefabrication for sanitary services.

www.muellerwuest.ch



**Prof. (FH) DI (FH)
Dr. Christian Heschl**
Head of Centre for Building
Technology
Burgenland University of
Applied Sciences

INSTRUMENTAL TO EDUCATION

“Working with Geberit and using the Revit® plug-in has given our students valuable hands-on experience and an in-depth understanding of the latest industry standards. Geberit's commitment to innovation and quality is clearly reflected in these tools, which not only increase efficiency, but also help train the next generation of technical building system engineers.“

The Centre for Building Technology focuses on the research and development of sustainable buildings. A central aspect of its work involves the use and continuous development of digital methods to make its solutions more efficient and fit for the future.

www.forschung-burgenland.at/gebaeudetechnik



**Prof. Dr.-Ing.
Reinhard Wimmer**
Building Information Modelling
Fakultät für Architektur & Bauwesen
Hochschule Karlsruhe
University of Applied Sciences

FOR SUSTAINABLE PLANNING

“My experience with Geberit and implementing BIM methods has been consistently positive. I am particularly impressed by the way Geberit has integrated the Level of Development (LOD) concept into its product families and BIM strategy. This integration facilitates phased and efficient planning, which is crucial for the success and sustainability of construction projects. Geberit also demonstrates its innovative and future-orientated approach to implementing BIM in the industry by providing digital product families and the necessary tools for creating valid BIM content models.“

Karlsruhe University of Applied Sciences is one of the largest and most research-driven universities of applied sciences in Baden-Württemberg, with key areas of focus including digitalisation and sustainability.

www.h-ka.de/die-hochschule-karlsruhe

Geberit International Sales AG
CH-8640 Rapperswil
Switzerland

sales@geberit.com

www.geberit-global.com